

6<sup>1/2</sup> Ft. Square Windmaster Umbrellas with Replaceable Fiberglass Ribs and Aluminum 1<sup>1/2</sup>" Pole

Available upon Request

6<sup>1/2</sup> Ft. Beachmaster Umbrellas with Aluminum 1<sup>1/2</sup>" Pole

Available upon Request



reco<sup>o</sup>crit<sup>®</sup>  
DESIGN LINE

- |                      |                      |
|----------------------|----------------------|
| <b>PB</b> 98 6697 31 | <b>TQ</b> 98 6641 31 |
| <b>FO</b> 98 6620 31 | <b>TC</b> 98 6682 31 |
| <b>PI</b> 98 6624 31 | <b>OR</b> 98 6619 31 |
| <b>LN</b> 98 6658 31 | <b>SK</b> 98 6694 31 |
| <b>TP</b> 98 6681 31 | <b>KH</b> 98 6603 31 |
| <b>BK</b> 98 6617 31 | <b>CV</b> 98 6625 31 |
|                      | <b>CY</b> 98 6602 31 |

**GARANTIE**  
**5**  
ANS/YEARS  
**GUARANTEE**

Fabric  
Tela  
Toile

**GARANTIE**  
**3**  
ANS/YEARS  
**GUARANTEE**

Frame  
Estructura  
Structure

Adjustable Pole Height  
Altura de mástil regulable  
Hauteur réglable du mât

- |                      |
|----------------------|
| <b>PB</b> 98 1297 31 |
| <b>SA</b> 98 1266 31 |



Sand Anchor Sold Separately  
Ancla de arena vendida por separado  
Ancrage sable vendu séparément

**SG** US 6063 31

Available upon Request

9 Ft. Market Umbrellas with Wooden 1<sup>1/2</sup>" Pole

WMU9

7 Ft. Market Umbrellas with Wooden 1<sup>1/2</sup>" Pole

A9895



OUTDURA

- |                      |                      |
|----------------------|----------------------|
| <b>PB</b> 98 9197 31 | <b>WH</b> 98 9104 31 |
| <b>FO</b> 98 9120 31 | <b>PE</b> 98 9149 31 |
| <b>BU</b> 98 9127 31 | <b>SA</b> 98 9148 31 |
| <b>TC</b> 98 9182 31 | <b>TP</b> 98 9181 31 |
| <b>KH</b> 98 9103 31 |                      |

**GARANTIE**  
**3**  
ANS/YEARS  
**GUARANTEE**

Fabric  
Tela  
Toile

**WARRANTY**  
**GARANTIE**  
**GARANTÍA**  
**1**  
YEARS/ANS  
AÑOS

Frame  
Estructura  
Structure

OUTDURA

- |                      |                      |
|----------------------|----------------------|
| <b>PB</b> 98 9497 31 | <b>WH</b> 98 9404 31 |
| <b>FO</b> 98 9420 31 | <b>PE</b> 98 9449 31 |
| <b>BU</b> 98 9427 31 | <b>TP</b> 98 9481 31 |
| <b>TC</b> 98 9482 31 |                      |
| <b>KH</b> 98 9403 31 |                      |

9 Ft. Round Windmaster Umbrellas  
with Replaceable Fiberglass Ribs and  
Aluminum 1 1/2" Pole

WU9



recocril®  
DESIGN LINE

- |                                  |                      |
|----------------------------------|----------------------|
| <b>PB</b> 98 8297 31             | <b>TQ</b> 98 8241 31 |
| <b>NY</b> 98 8260 31             | <b>TC</b> 98 8182 31 |
| <b>FO</b> 98 8220 31             | <b>OR</b> 98 8019 31 |
| <b>PI</b> 98 8424 31             | <b>KH</b> 98 8203 31 |
| <b>TP</b> 98 8181 31             | <b>CV</b> 98 8425 31 |
| <b>BK</b> 98 8017 31             | <b>CY</b> 98 8002 31 |
| <b>New!</b> <b>LR</b> 98 8666 31 |                      |

7 1/2 Ft. Round Windmaster Umbrellas  
with Replaceable Fiberglass Ribs and  
Aluminum 1 1/2" Pole

WU75



recocril®  
DESIGN LINE

- |                                  |                      |
|----------------------------------|----------------------|
| <b>PB</b> 98 3897 31             | <b>TQ</b> 98 3241 31 |
| <b>NY</b> 98 3860 31             | <b>TC</b> 98 3182 31 |
| <b>FO</b> 98 3820 31             | <b>OR</b> 98 3019 31 |
| <b>PI</b> 98 3424 31             | <b>SK</b> 98 3194 31 |
| <b>TP</b> 98 3181 31             | <b>KH</b> 98 3803 31 |
| <b>BK</b> 98 3017 31             | <b>CV</b> 98 3425 31 |
| <b>New!</b> <b>LR</b> 98 3666 31 | <b>CY</b> 98 3002 31 |

Toile  
**GARANTIE**  
**3**  
ANS/YEARS  
**GARANTIE**

Frame  
Estructura  
Structure

Windmaster10  
10 Ft. Square Cantilever Umbrellas  
with Aluminum Pole and  
Storage Cover

Available upon Request

High Quality Crank Mechanism  
Easy Height Adjustment

Available upon Request

recocril®  
DESIGN LINE



Deck Plate Sold Separately  
Placa para cubierta vendida por separado  
Platine de fixation pour terrasse vendue separement



**BK** US 6030 17

Available upon Request

Cross Base Sold Separately  
Base cruz vendida por separado  
Base croix vendue separement



**BK** US 6060 17

Available upon Request

- |                      |
|----------------------|
| <b>CY</b> 98 7002 31 |
| <b>LN</b> 98 7581 31 |
| <b>BK</b> 98 7017 31 |
| <b>FO</b> 98 7020 31 |



Protective Storage Cover  
with Easy On Pole Included!  
Funda protectora y pértiga incluidas  
Gaine protectrice et perche incluses

16" x 16" Patio Stones not included  
Losetas de piedra 16"x16" no incluidas  
Dalles en pierre 16"x16" non incluses

**GARANTIE**  
**5**  
ANS/YEARS  
**GARANTIE**

Fabric  
Tela  
Toile

**GARANTIE**  
**3**  
ANS/YEARS  
**GARANTIE**

Frame  
Estructura  
Structure

# Customize Your Windmasters & Chaises

Ahora proponemos personalizar sus productos  
Maintenant nous proposons la personnalisation de vos produits



Exclusively for Windmaster Umbrellas

## Why Customize?

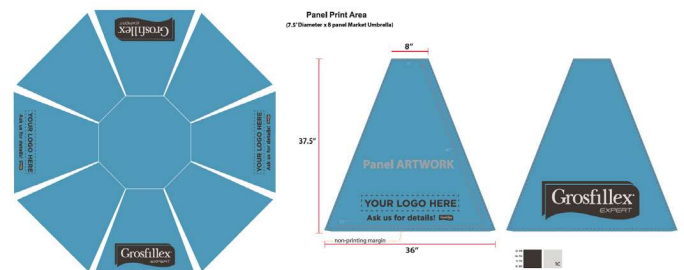
- Promotes business and increases brand recognition
- Easily identify and keep track of umbrella inventory
- Custom printing makes up 30% of umbrella business

## We offer the best quality!

- Ink spread at least three times for deep penetration
- Clear coating over ink to increase color fastness and a crisp look

## 3 quick and easy steps

1. Collect artwork - high definition (300 dpi)
2. Layout sent back for approval of order and delivery date confirmation
3. Within 48 hours, printing layout is made and returned with quote  
Consult [grosfillexfurniture.com](http://grosfillexfurniture.com) for approximate lead time  
Minimum quantities per logo is 20 pieces



- Logo Heat Stamping for Nautical, Nautical Pro, Marina, & Catalina Chaises
- Custom orders accepted on a case by case basis

**Contact your National Hospitality Representative for a Quote Today!**

# Umbrella Bases

## A602

Resin Umbrella Base with Fill Cap



- WH US 602 104
- BZ US 602 137
- BK US 602 117

## FBW84

84 Lb. Freestanding Umbrella Base with Wheels\*



- WH US 608 404
- BZ US 608 437
- SA US 608 466
- CH US 608 402

### Available upon Request

50 lb. Flat  
20" Round  
Umbrella Base



- BK US 604 017

### Available upon Request

75 lb. Flat  
24" Square  
Umbrella Base



- BK US 605 017

### Available upon Request

70 Lb. Umbrella Base\*  
with 16" Stem



- WH US 607 004
- SA US 607 066
- BK US 607 017

## TUB35

35 Lb. Umbrella Base\*  
with 10" Stem

- WH US 600 604
- BZ US 600 637
- SA US 600 666
- BK US 600 617

## UBR35

35 Lb. Umbrella Ring\*  
(optional)



- WH US 106 604
- BZ US 106 637
- SA US 106 666
- BK US 106 617

**\*Umbrella Bases: 35 lb., 35 lb. ring, 70 lb., and 84 lb.**

**WARNING: Cancer - [www.P65Warnings.ca.gov](http://www.P65Warnings.ca.gov).**

**AVERTISSEMENT: Cancer - [www.P65Warnings.ca.gov](http://www.P65Warnings.ca.gov).**

**ADVERTENCIA: Cáncer - [www.P65Warnings.ca.gov](http://www.P65Warnings.ca.gov).**

# Decorative Resin Fencing

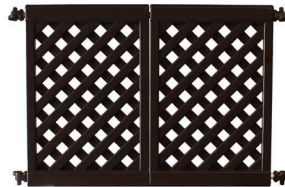
## 9610



- BN US 960 423
- BK US 960 117

Fence Post & Base

## 9612



2 Panel Section

- BN US 962 423
- BK US 962 117



## 9613



3 Panel Section

Connector Pack

- BN US 963 423
- BK US 963 117

- BN USSP 0236
- BK USSP 0235

