



Express Roller Shades

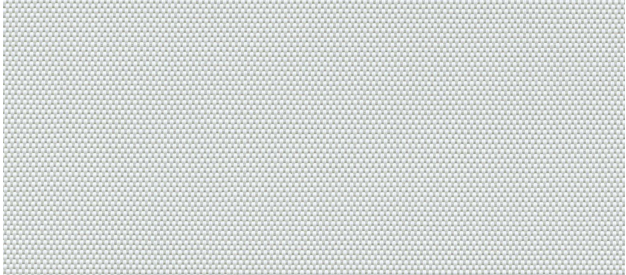
SPECTRUM BLACKOUT



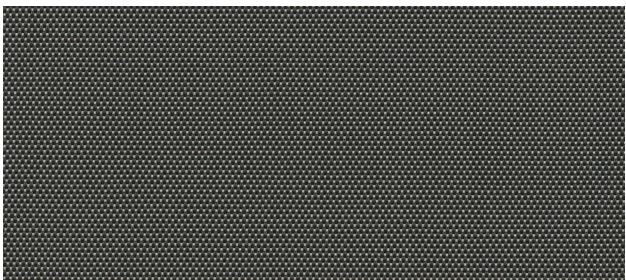
ICE



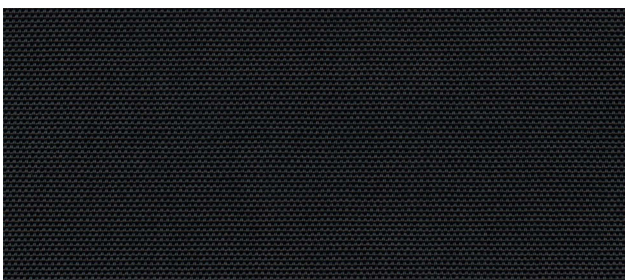
BARLEY



ALLOY

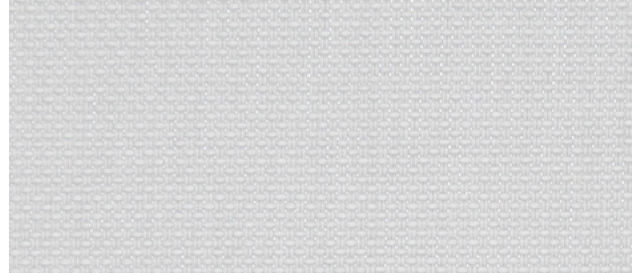


GRAPHITE

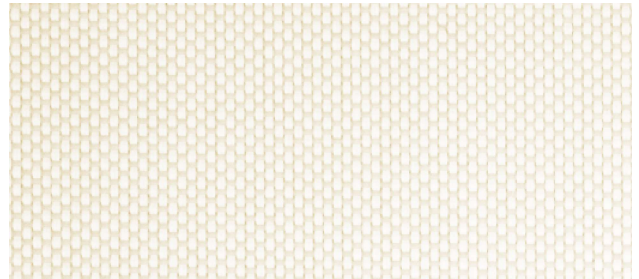


BLACK

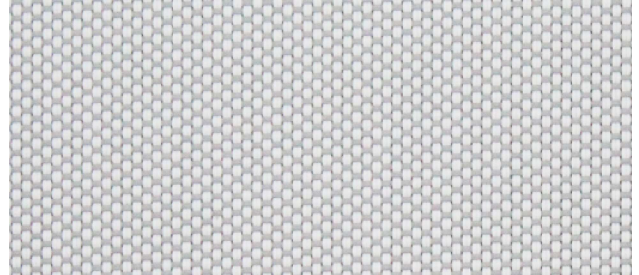
SPECTRUM 5% OPENNESS



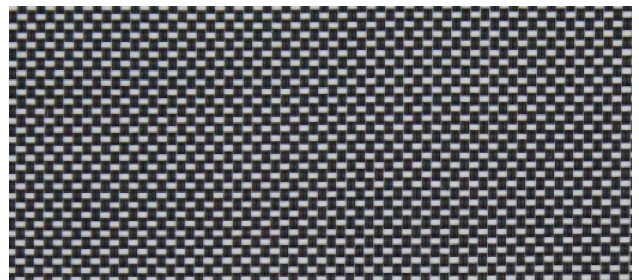
WHITE



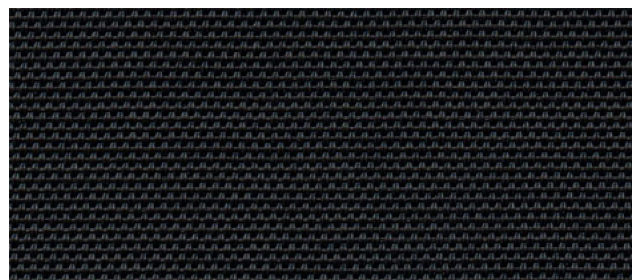
BARLEY



ALLOY



GRAPHITE



BLACK

SPECTRUM BLACKOUT

SPECIFICATIONS

Composition	25% Polyester, 75% PVC
Weight	16.96 oz/yd ² (575g/m ²)
Light fastness	Grade 4 (AATCC 16)
Width	118" (3m)
Cleaning	Wipe clean with warm soapy water and damp cloth.
Fire Classifications	NFPA 701
Acoustical Performance	NCR 0.10 SAA 0.11
Environmental Standards	GREENGUARD Gold Health Product Declaration Oeko-Tex Standard 100 ISO 14001

SPECTRUM 5% OPENNESS

SPECIFICATIONS

Composition	26% Polyester, 74% PVC
Openness Factor	Average 3%
Weight	14.01 oz/yd ² (475 g/m ²)
Light fastness	Grade 4 (AATCC 16)
Width	98.4" (2.5m), 118" (3m)
Cleaning	Wipe clean with warm soapy water and damp cloth.
Fire Classifications	NFPA 701
Environmental Standards	GREENGUARD Gold Health Product Declaration Oeko-Tex Standard 100 ISO 14001

